



## Nelweld<sup>®</sup> N800i<sup>™</sup>

*Third generation inverter technology propels stud welding into the 21<sup>st</sup> century*

This new, dependable, light-weight and compact stud welder is not light in power and precision. It can deliver up to 800 amps for 1/2" (12mm) full base diameter stud welding. The friendly user interface has 10\* preset buttons, bright alpha-numeric displays, graphic gun, and weld quality indicator. Its simplicity reduces set-up time, operator training, and error. Precision control at 60,000 Hz frequency ensures the most stable arc, accurate heat input and highest quality welding process. The features and benefits include:

- **Energy Efficient** inverter saves hundreds to thousands of dollars/euros from old thyristor designs
- **Weld Monitor<sup>™</sup>** built-in arc energy watchdog to detect bad welds from actual process signals
- **Gun Monitor<sup>™</sup>** built-in gun watchdog to match gun speed and adaptively compensate for gun wear
- **Cable Monitor<sup>™</sup>** built-in cable and connector watchdog to detect cable wear and loose connector
- **Stud Expert<sup>™</sup>** choose setting from stud diameter and can be re-programmed by user spreadsheet
- **Pulse Waveform** reduces heat input, cuts surface contaminants and stiffens arc for out-of-position welds
- **Plunge Current<sup>™</sup>** saves electricity, reduces cable wear, and maintains arc energy despite gun wear
- **Cold Plunge Prevention<sup>™</sup>** extends arc time when stud plunge is slowed down\*\*
- **Constant Energy<sup>™</sup>** delivers constant heat input despite surface coating, gun lift and flux ball variation
- **Nelware<sup>™</sup>** production weld quality record keeping and arc signals oscilloscope PC software
- **PLC interface** option provides connectivity to robot and PLC with a host of fieldbus networks
- **Chuck Change Indicator** alerts user to perform scheduled preventative maintenance of consumable parts
- **RoHS Compliance** eliminates lead and 5 other hazardous substances to protect the environment

Integrated gas control option allows programmable pre and post flow for aluminum and galvanized sheet welding. The welder carries a 2 year or 1,000,000 weld warranty.

\* Extendable to 40 programmable presets to store prequalified weld settings in production.

\*\* For example, when weld spatter gets stuck between the stud and the ferrule.

### Applications

- Shipbuilding, industrial, automotive repair and production
- Insulation pins and threaded studs

N800i

## Technical Data

<b>Stud diameter</b>	12 gauge to 1/2" (3-12 mm)
<b>Weld Process</b>	Drawn arc, gas arc, and short cycle
<b>Weld Current</b>	50A-800A continuously adjustable
<b>Weld Time</b>	5 – 1000 ms
<b>Weld Rate</b>	3 studs/min @ 1/2" (12.7 mm) 6 studs/min @ 3/8" (10 mm) 12 studs/min @ 1/4" (6 mm)
<b>Dimensions</b>	13" X 10" X 20-1/2" 33 cm X 25 cm X 52 cm
<b>Weight</b>	40 lb (18 kg) without input cord
<b>Input Power*</b>	3 phase 208-230V, 50/60 Hz @ 30A 3 phase 400-460V, 50/60 Hz @ 15A 3 phase 575V, 50/60 Hz @ 15A
<b>Material</b>	Steel, stainless steel, aluminum, heat-resistant steel, advanced high strength steel
<b>Gun</b>	Light duty pinning gun, standard duty NS-40
<b>Insulation</b>	IP23S



1080i

### Options

\* Specify input voltage when ordering

Input voltages\*: 230V, 460V, 575V, and 400V CE

Power connectors: Dinse, Camlok

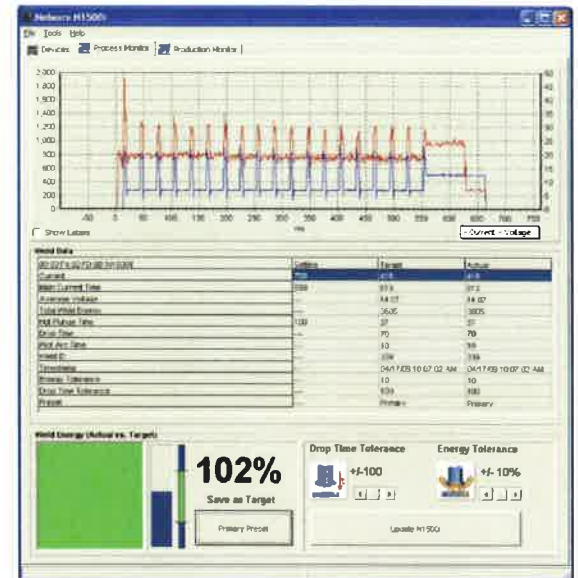
Gun connectors: Hubble, R&S, Binder, Harting

Gas control kit

Nelware™ PC software

Mobility cart

Protective bracket



### USA

7900 West Ridge Road  
Elyria, OH 44036-2019  
Telephone: 800.635.9353  
Fax: 440.329.0526  
www.NelsonStudWelding.com

### Germany

Phone: 49.2332.661.0

### China

Phone: 86.22.26371514

### France

Phone: 33.1.34.11.94.00

### Canada & Mexico

Phone: 800.635.9353

### Italy

Phone: 39.11.6059230

### Great Britain

Phone: 44.1296.433500